

EMPEROR PENGUIN FUN FACTS

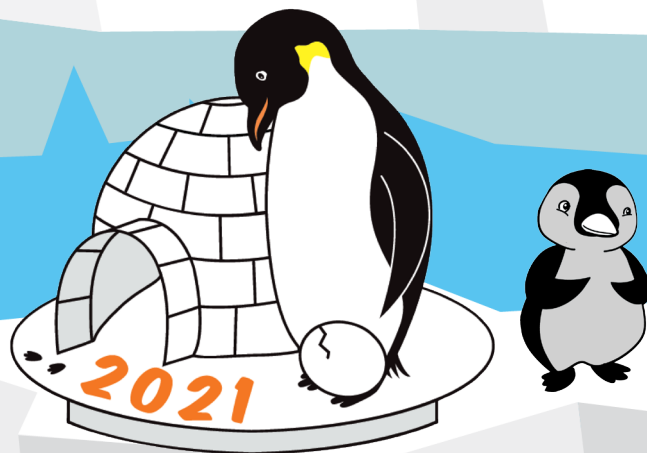
There are approximately 595,000 adult Emperor penguins in Antarctica.

- It's the only animal to inhabit the open ice of Antarctica during the winter.
- They face wind chills as cold as -76°F and blizzards of 124mph.
- Four layers of scale-like feather protect them from icy winds and provide a waterproof coat.
- Colonies of adults and chicks work together to huddle for warmth. 5,000 or more tightly packed adults and chicks shuffle around, so each takes a turn - but not too long - on the outside of the huddle where it's cold.

THE TALLEST AND HEAVIEST OF ALL LIVING PENGUIN SPECIES, REACHING AN AVERAGE 39 INCHES IN LENGTH AND CAN WEIGH UP TO 88 POUNDS! DIET CONSISTS PRIMARILY OF FISH, KRILL, AND SQUID.

Their aerodynamic bodies and strong flippers make them excellent swimmers, reaching speeds of 7.6mph.

They can dive deeper than any other bird - as deep as 565 meters (1850 feet) - and they can stay under for more than 20 minutes!



- A social animal, they walk up to 75 miles each year to reach their colonial nesting areas.
- Once an egg is laid, the male will care for the egg until hatched while the mother returns to the sea to hunt for food. This can last up to 2 months!
- As the young penguins grow, adults leave them in groups of chicks called crèches while they leave to fish.



CONSIDERED A "NEAR THREATENED" SPECIES DUE TO DISEASE, HABITAT DESTRUCTION, AND DISTURBANCE OF BREEDING COLONIES BY HUMANS.

THEY CAN LIVE 15-20 YEARS IN THE WILD.